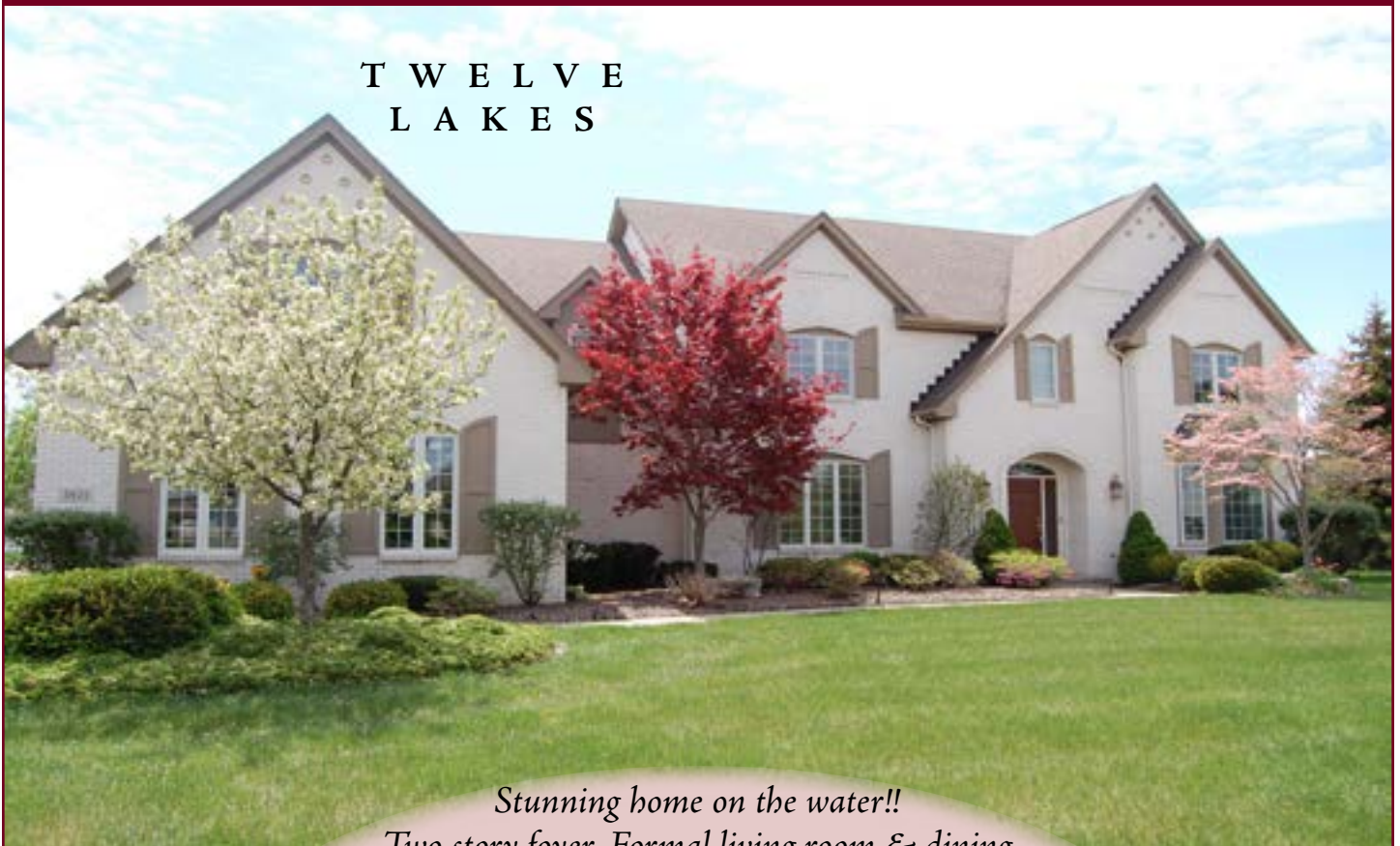


Craig A. Rush Presents
5625 Country Lake, Sylvania

S T U N N I N G

T W E L V E
L A K E S



Stunning home on the water!!

Two story foyer. Formal living room & dining room with crown molding. Large family room with fireplace & built-ins, Eat-in kitchen with fireplace & appliances. Vaulted sunroom. Master suite with remodeled master bath including heated tile floor. Three additional bedrooms with ceiling fans & walk-in closets. Second floor bonus room & den. Finished basement with three separate rooms! Covered porch & stone patio overlook 266ft of waterfront! Must see!! Swim, fish, boat and play ice hockey at Twelve Lakes. Large custom water deck. Best lot in Twelve Lakes. Oversized 3 car garage. Walk to Pacesetter Park & events at Centennial Terrace!

PROPERTY FEATURES

Master Suite	18 x 14	4 BEDROOMS, 4 FULL, 1 HALF BATHS
Bedroom #2	13 x 13	
Bedroom #3	15 x 13	SQUARE FOOTAGE: 4453
Bedroom #4	16 x 12	LOT SIZE: 59 x IRREGULAR
Kitchen	23 x 15	YEAR BUILT: 1998
Family Room	24 x 15	TAXES (½ year): \$6030
Den	15 x 7	SCHOOLS Highland Elementary McCord Jr. High School Northview High School
Dining Room	18 x 12	
Living Room	19 x 13	
Sunroom	12 x 12	
Bonus Room	22 x 13	
Rec Room	26 x 15	
Game Room	24 x 14	
Exercise Room	36 x 12	



LIVING ROOM



- ✦ Formal
- ✦ Crown molding
- ✦ Bay window

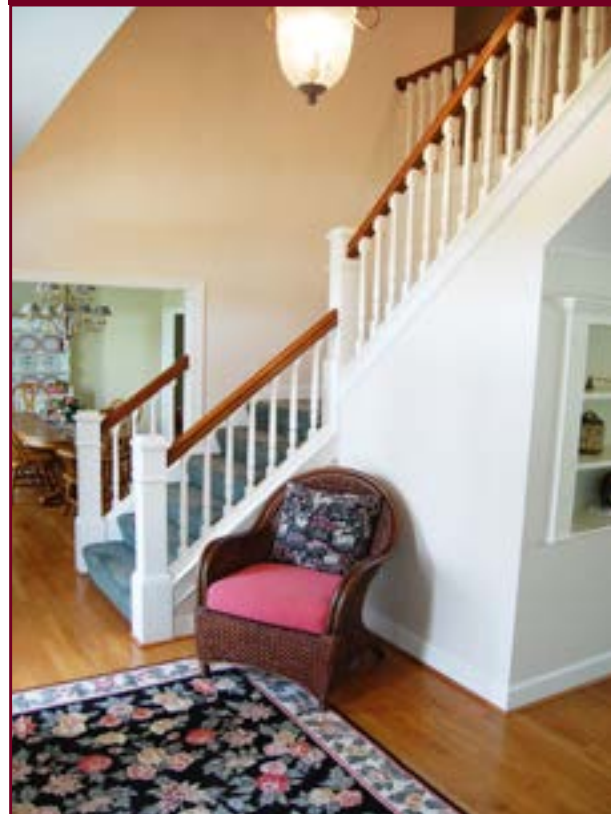


DINING ROOM



- ✦ Formal
- ✦ Hardwood floor
- ✦ Crown molding

FOYER



- ✦ Two story
- ✦ Hardwood floor



EAT IN KITCHEN



- ✦ Large island
- ✦ Hardwood floor
- ✦ Corrian countertops
- ✦ Tons of cabinet & counter space
- ✦ Dinette area
- ✦ Pantry
- ✦ Planning desk
- ✦ Two way fireplace with Family Room
- ✦ Comes equipped with appliances including Viking convection oven & Viking side-by-side refrigerator, Jenn-Air dual fuel convection range/oven, Bosch dishwasher, microwave and disposal

FAMILY ROOM



- ✦ Crown molding
- ✦ Two way fireplace with kitchen
- ✦ Ceiling fan
- ✦ Overlooks water
- ✦ Built-in entertainment center with cabinets & shelving



SUN ROOM



- ✦ Overlooks water
- ✦ Vaulted ceiling
- ✦ Ceiling fan
- ✦ Hardwood floor
- ✦ Leads to patio



MASTER SUITE



- ✦ Tray ceiling
- ✦ Ceiling fan
- ✦ Two walk-in closets
- ✦ Overlooks water



HALF BATH

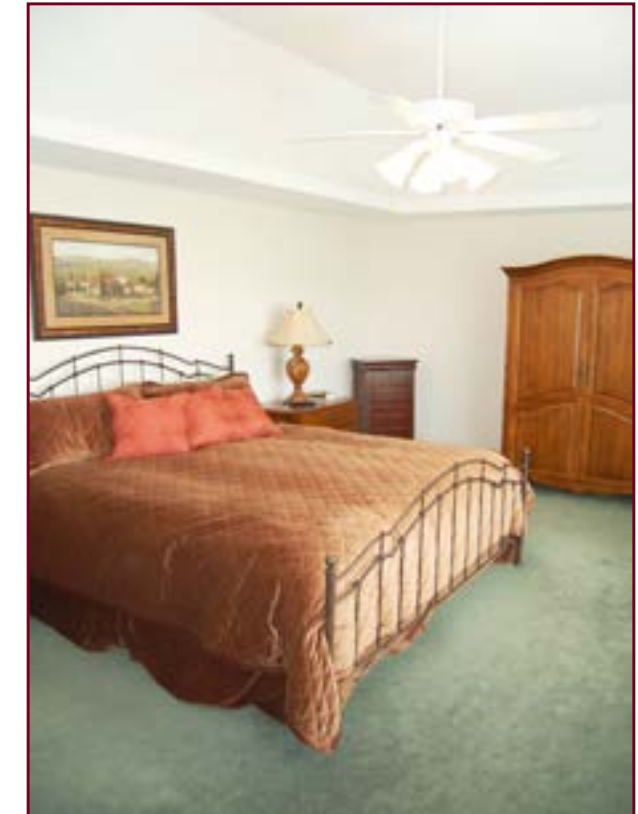


- ✦ First floor
- ✦ Hardwood floor
- ✦ Decorative sink

LAUNDRY



- ✦ First floor
- ✦ Tile floor
- ✦ Built-in sink
- ✦ Access to covered porch



MASTER BATH



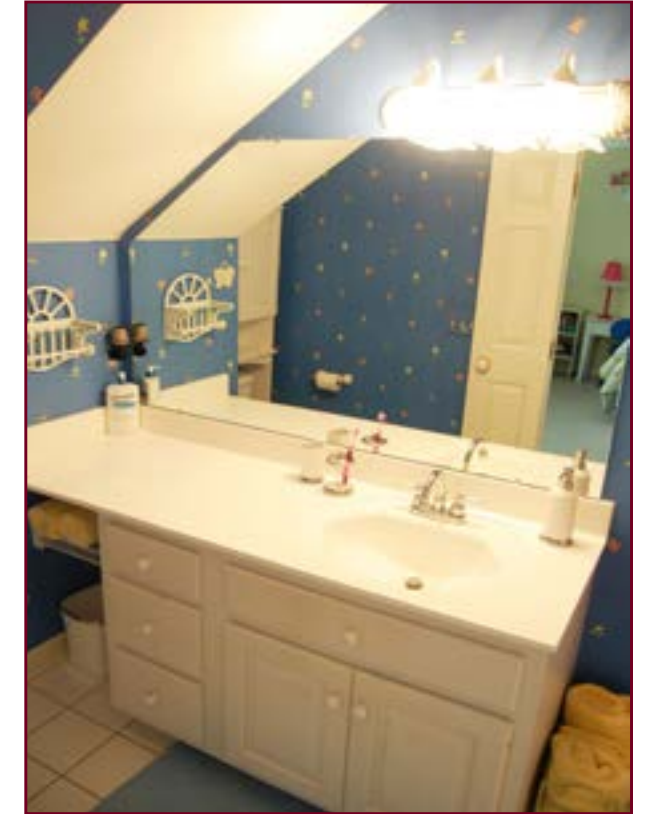
- ✦ Remodeled in 2013
- ✦ Heated tile floor
- ✦ Large tile shower with bench
- ✦ Vaulted ceiling
- ✦ Skylight
- ✦ Raised dual sink vanity with granite countertops
- ✦ Whirlpool tub with granite surround



GUEST SUITE



- ✦ Ceiling fan
- ✦ Walk-in closet
- ✦ Guest bath with tile floor, shower/tub combo & single raised vanity



BEDROOMS



- ✦ Walk-in closet
- ✦ Ceiling fan
- ✦ Vaulted ceiling



- ✦ Walk-in closet
- ✦ Ceiling fan

B O N U S R O O M



- ✦ Ceiling fan
- ✦ Access to attic storage
- ✦ Closet

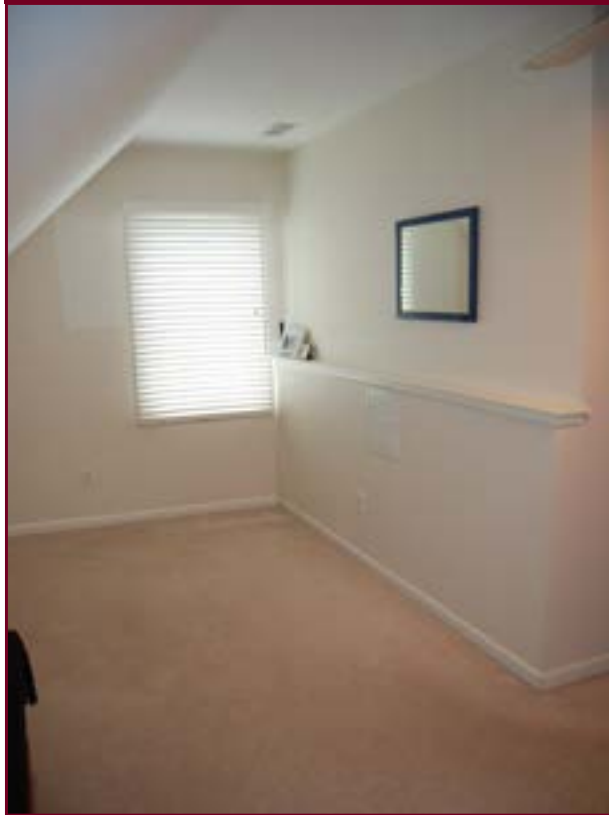


B A S E M E N T



- ✦ Rec room
- ✦ Game room
- ✦ Exercise room
- ✦ Unfinished areas for storage
- ✦ Full bath with walk-in shower & single raised vanity

D E N



- ✦ Ceiling fan

M A I N B A T H



- ✦ Tile floor
- ✦ Dual sink vanity
- ✦ Walk-in shower



Y A R D



✦ Large, well landscaped waterfront lot



D E C K



W A T E R



✦ 266ft of waterfront

P A T I O



- ✦ Covered porch
- ✦ Aggregate stone patio
- ✦ Overlooks 266ft of waterfront



G A R A G E



✦ 3½ car sideload garage with additional storage area

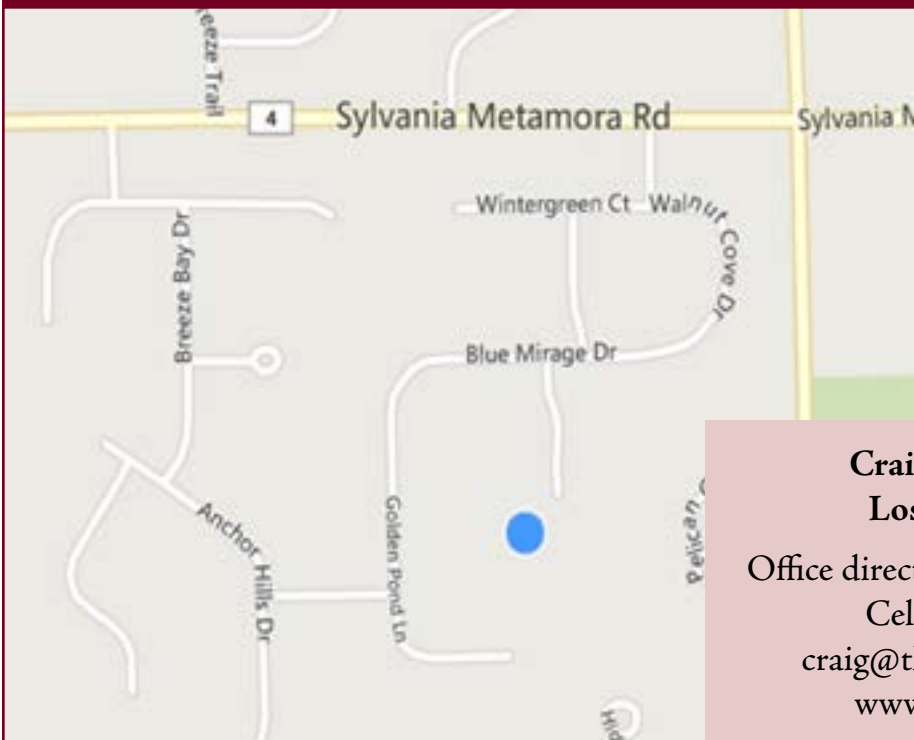
E X T E R I O R B A C K



A D D I T I O N A L F E A T U R E S

- Two GFA furnaces, two AC units - furnace & ac for 1st floor is brand new, humidifier, central vacuum
- Two staircases; inground sprinkler; security system; 9ft ceilings on first floor

M A P A N D D I R E C T I O N S



Sylvania Metamora (between Mitchaw & Kilburn) to Waterview to Wintergreen to Sunset Lake, Right on Blue Mirage, Left on Country Lake

Craig A. Rush, CRS
Loss Realty Group

Office direct: 419-725-1807

Cell: 419-262-0321

craig@therushteam.com

www.craigarush.com



V I S I T WWW.CRAIGARUSH.COM
F O R A V I R T U A L T O U R